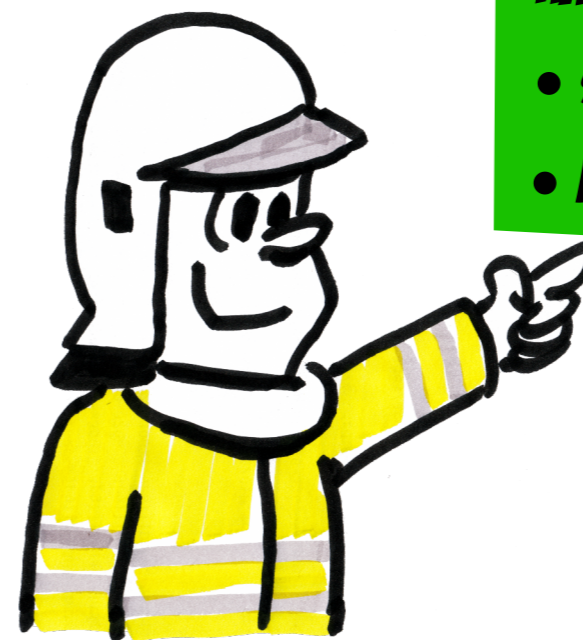


# **PUT WATER ON FIRE AS SOON AS POSSIBLE**

## **THEORY**

- **BUYING TIME**
- **ACHIEVING KNOCK-DOWN**
- **IMPROVING SURVIVABILITY**
- **SAFER FOR INTERIOR FIREFIGHTERS**



## **HANDS-ON TRAINING:**

- **SEEING, FEELING, HEARING = BELIEVING**
- **BUILD EXPERIENCE!**

**- YOURS & OTHER'S  
- INCIDENTS & TRAINING**

# DO A 360 DEGREES ASSESSMENT

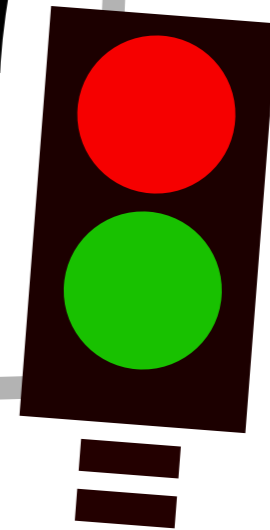
WHAT  
TO LOOK  
FOR?

- MAKE IT PART OF OFFICER EXAMS
- TAKE AWAY THE (PERCEIVED) PENALTY OF TAKING TIME TO DO A 360
- TEACH BE + SAHF THERMAL IMAGING
- REFRESHER COURSE FOR CURRENT COMMANDERS
- IMPLEMENT BUILDING SECTOR SYSTEM (A,B,C/1,2,3, ETC).



**CURRENT PROBLEM:  
A LACK OF COMPLIANCE AND MOTIVATION**

# **IMPLEMENT GO OR NO GO ASSESSMENT AT EACH OPENING**



✓ **SAHF IS USED INVENTIVELY  
AND GO-NO/GO IS AN ATTEMPT  
TO PROVIDE THE CRITERIA**

✓ **TEACH FIRE DYNAMICS**

✓ **LINK VISUAL CONDITIONS TO BUILDING  
AND ENVIRONMENTAL FACTORS  
AND RELATE TO SAHF INDICATORS**

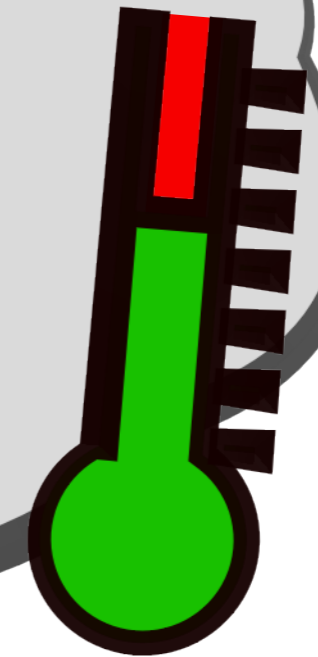


✓ **IMPLEMENTATION**

- **CRITERIA: SAHF**
- **CASE-BASED TRAINING**
- **TEMPLATE MATCH: BUILD SCENARIO'S  
THAT MATCH RESPONSE TYPE, LOCAL, COUNTRY**
- **USE MULTI-MEDIA**



# COOL THE SMOKE



## TRAINING & EDUCATION

(SMOKE)THEORY

PRACTICE

REAL BUILDING

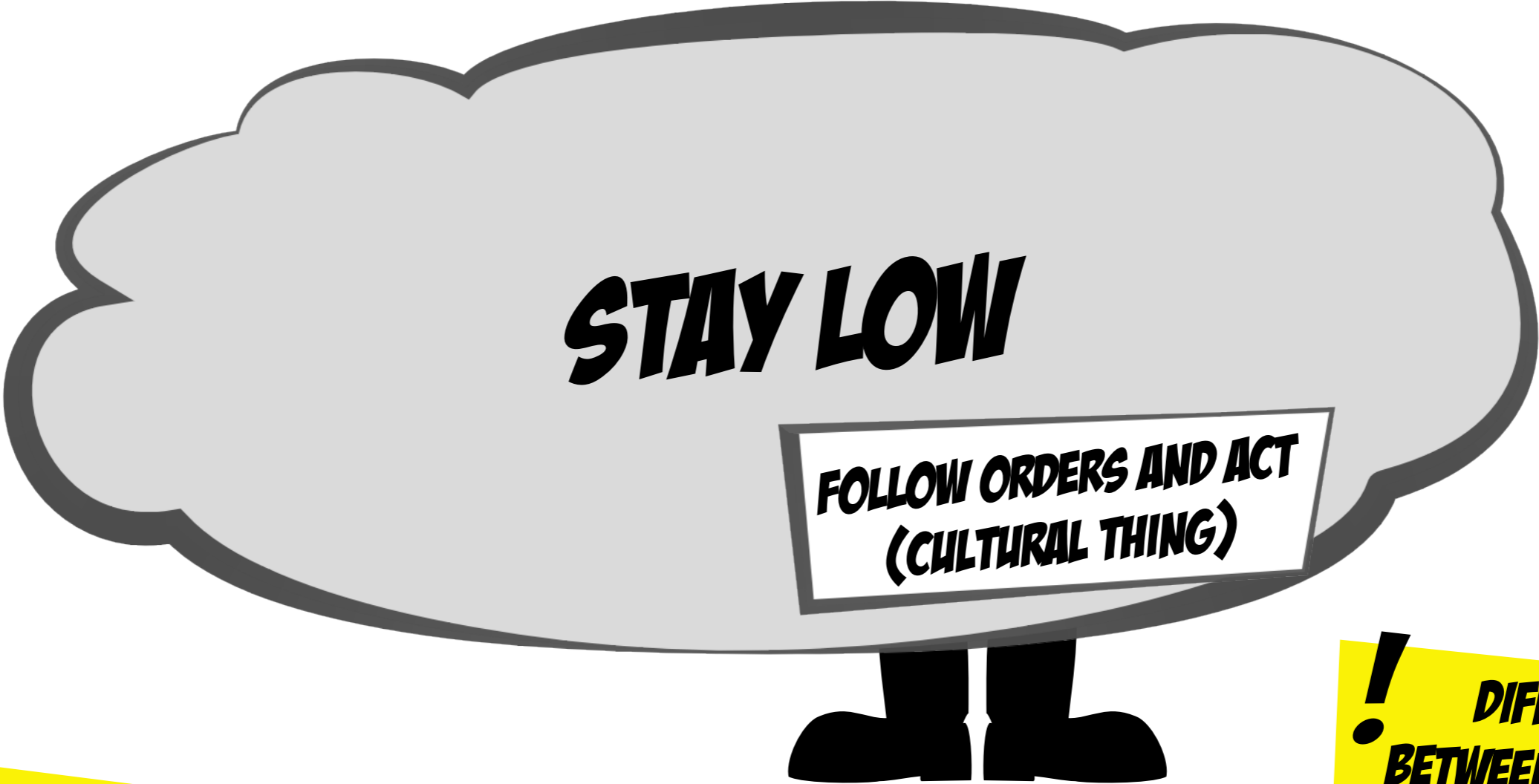
DEMO

CONTAINER

DOLLHOUSE







**BUILD COMMON SENSE IN EDUCATION**

**! DIFFERENCE BETWEEN EDUCATION AND UNDERSTANDING**

**REASONS AND BENEFITS OF STAYING LOW**

- VISIBILITY
- STABILITY
- HEAT
- SPEED

**ALSO: TEACH WHEN NOT TO STAY LOW**



# IDENTIFY THE FLOWPATHS / CLOSE ALL OPENINGS PRIOR TO FIRE CONTROL

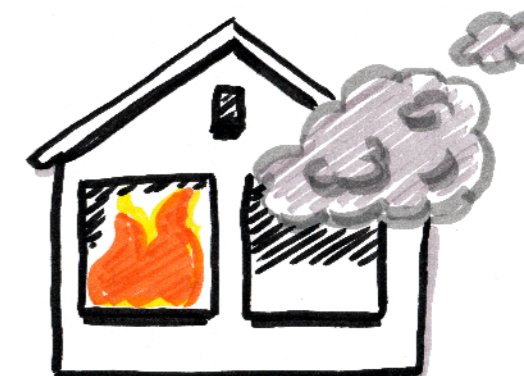
## BASIC UNDERSTANDING OF FIRE BEHAVIORS:

- TEACH VENTILATION PROFILE
- IDENTIFY TYPES OF FLOW PATHS:  
UNIDIRECTIONAL FLOW / BIDIRECTIONAL FLOW & DYNAMIC FLOW
- TEACH FACTORS THAT HAVE AN IMPACT ON FLOW PATHS

## OPERATIONAL FACTORS:

- COMMUNICATIONS (CREWS NOT OPENING DOORS)
- KEEP DOORS CLOSED / MANAGE VENTILATION
- STOP FLOW PATH: CLOSE DOORS / WINDOWS

CASE STUDIES  
REGARDING INCIDENTS  
INVOLVING FLOW PATHS



LIVE FIRE  
TRAINING

SMALL SCALE  
EXPERIENCE

# **COMMAND AND CONTROL MUST BE BASED ON CLEARLY DEFINED STRATEGIC OBJECTIVES**



**IF YOU WANT TO REACH OBJECTIVES,  
A COMMAND AND CONTROL SYSTEM IS NEEDED,  
RULES OF ENGAGEMENT,  
STANDARD OPERATIONAL GUIDELINES.**

**? HOW DO YOU IMPLEMENT  
COMMAND AND CONTROL?**



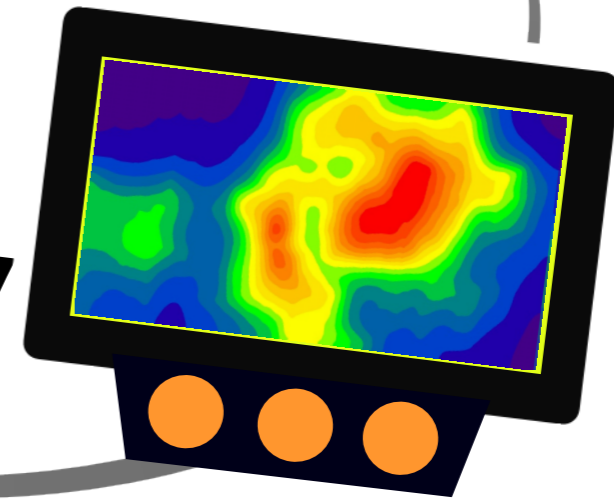
**CONCLUSION: ALL FIRE SERVICES KNOW WHAT THEY DO  
WHEN THEY GO TO A FIRE, THIS IS NOT A QUESTION**





**EVERY CREW INSIDE HAS A TIC,  
AND KNOWLEDGE  
TO USE CORRECTLY**

**MAKE IT STANDARD  
FOR CREW!**

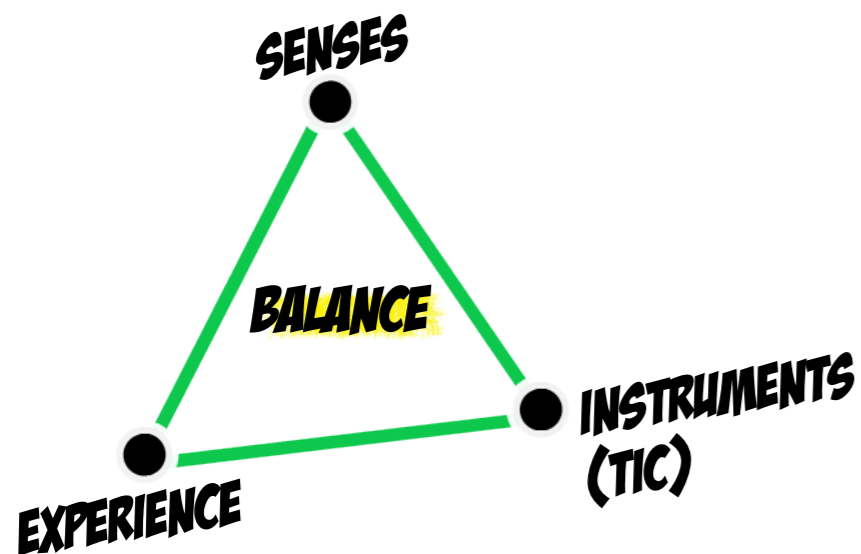


**COST**

**VALUES**

TECHNOLOGY GETS BETTER,  
THE PRICE GOES DOWN

RECORDING IS A PLUS  
FOR TRAINING AND DEVELOPMENT



**TRAINING IS ESSENTIAL AND SHOULD SHOW IT'S IMPORTANCE.  
FOCUS ON:**

- THEORY
- HOW TO OPERATE
- HOW TO USE IT

USE REAL SMOKE  
DURING TRAINING!

